

# Is your child taking the N- or O-Levels soon?

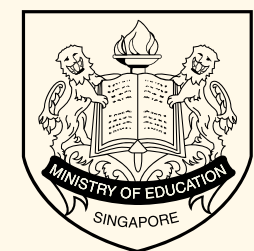


## Parent Kit

**Missed our  
last issue?**

[Click here](#) for our  
previous Parent Kits

**UPDATED  
FOR 2021**



Ministry of Education  
SINGAPORE

# Where to after secondary school?

The post-secondary education landscape offers various options suited for different interests and learning styles of our children.

Help your child be clearer about their strengths, interests, and learning styles by talking to them about the following:

- 1) What are you good at?
- 2) What do you enjoy doing?
- 3) What helps you to learn best?

With greater clarity and a goal in mind, your child will be able to explore the various options meaningfully.



Encourage your child to be open and think about possible opportunities and careers.

What are the options available? Check out the post-secondary section on [MOE's website](#). Your child may explore the post-secondary institutions at their convenience and also read more about the admissions exercises [here](#).



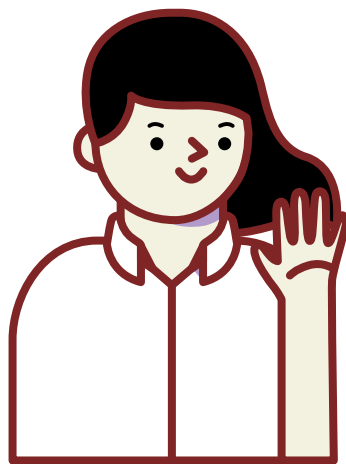
[Click here](#) to watch a video on the various post-secondary pathways.

[Click here](#) for resources to support your child in their education and career journey.

# Direct School Admission for Junior Colleges (DSA-JC) or Early Admission Exercise (EAE) to ITE or Polytechnics?

With your child's strengths and interests in mind, explore the different admission exercises available to help them gain entry into a junior college, Millenia Institute, polytechnic or ITE. Click on the links find out more!

## DSA-JC (For O-Level students)



Your child may apply to a DSA school before taking the GCE O-Level examinations. They may apply based on their talent in sports, CCAs and specific academic areas that may not be demonstrated at the O-Level examinations.

# Direct School Admission for Junior Colleges (DSA-JC) or Early Admission Exercise (EAE) to ITE or Polytechnics?

## Poly EAE (For O-Level students)



Poly EAE is an aptitude-based admissions exercise that allows your child to apply for and receive conditional offers for admission to polytechnics prior to receiving their O-Level examination results.

## ITE EAE (For O-N-level students)



ITE EAE is an aptitude-based admissions exercise that allows your child to apply and receive conditional offers for admission to ITE before receiving their O-Level or N-Level examinations results.

# Be there for your child as they adjust to post-secondary education

## TIP #1:

During family time and through conversations, **Talk** to your child about their experiences, **Ask** them about their thoughts and feelings and **Discuss** their aspirations.



## TIP #2:

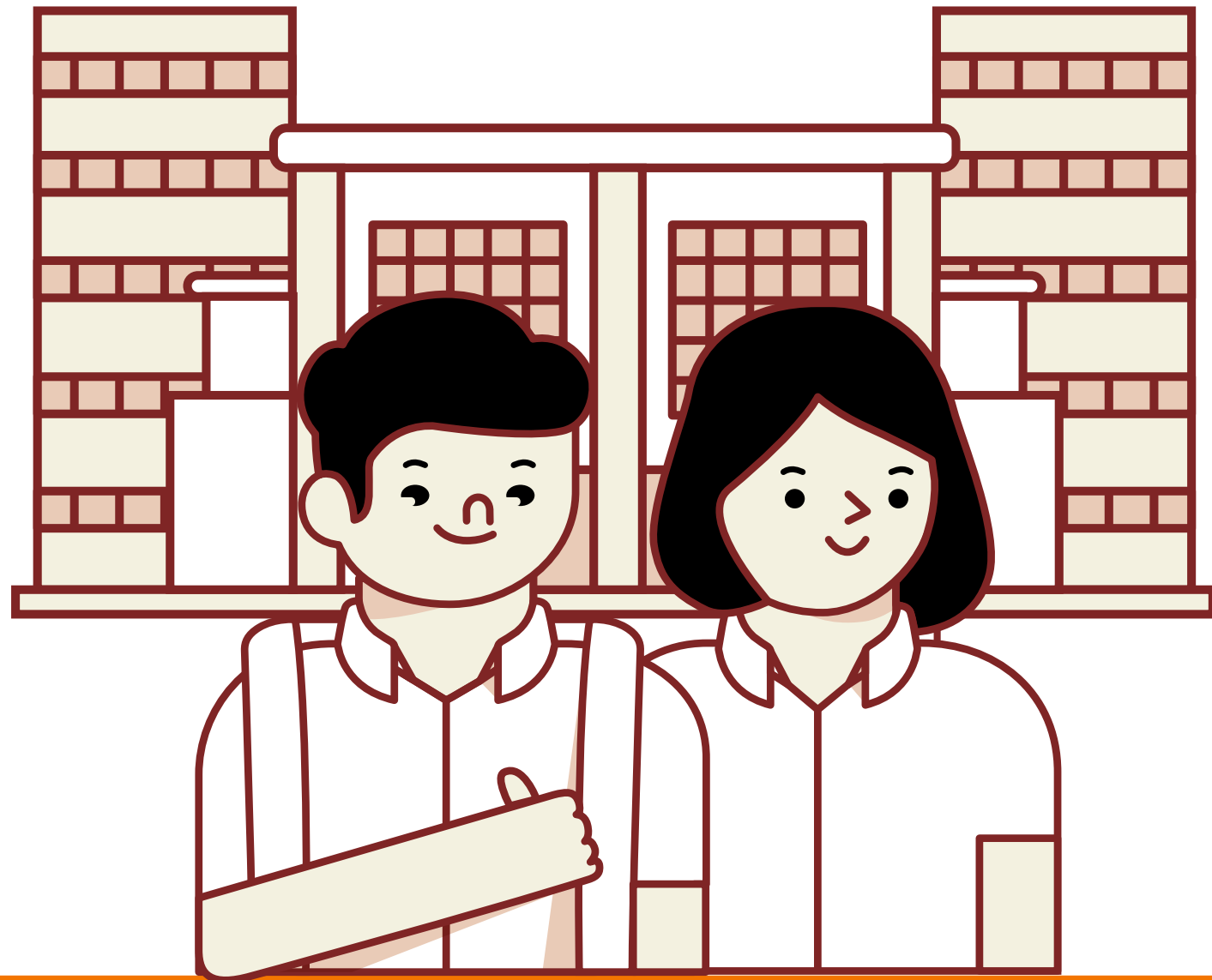
**Be S.A.F.E!** Create a caring and supportive environment to help nurture your child's social and emotional skills.

[Click to find out](#) what S.A.F.E stands for.



# How else can you support your child?

Find out at MOE's Post-secondary Transition Webinar on 29 May @ 10am! There will be a range of youth panellists who will share their post-secondary experiences and what is important when choosing a post-secondary pathway.



[Click on the link to RSVP](#)



**Want more parent kits?**  
[Click here](#) to tell us what you would like to see!